

People deserve fiber.



Aura E650 Installation Guide



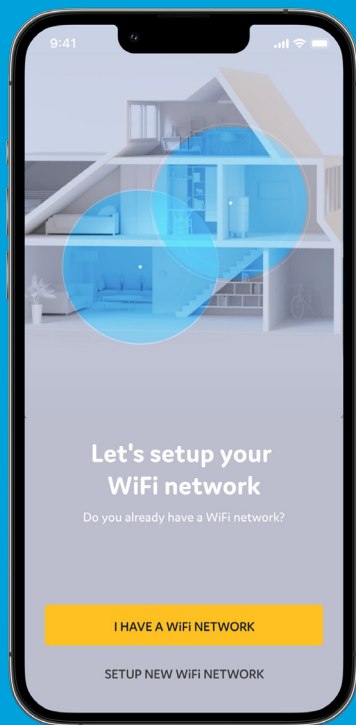
Revision 1.2 - September 2023 - Copyright © 2023 Genexis Netherlands B.V. All rights reserved.

Multiple languages of this document and additional product information are available on <https://genexis.eu/product/aura/downloads>
Genexis assumes no responsibility for any inaccuracies in this document. Genexis reserves the right to change, modify, transfer, or otherwise revise this publication without notice.

Wi-Fi EasyMesh™ supported

Installation with use of app

You're just a few steps away to install your device via the Genexis EasyWiFi app



1

Scan QR-code



2

Download app and follow the steps



Installation guide

Getting started

Check if the following items are in the giftbox:

- Aura E650
- Wall-mount bracket
- Power adapter
- Network cable
- Plugs & screws
- Labels (self-adhesive)

Label position

The product label is positioned on the bottom of the Genexis Aura device and additional labels are included in the giftbox.

Genexis EasyWiFi app

Installation and management of the Genexis Aura E650 device can be done with help of the mobile application Genexis EasyWiFi. Please follow the steps on the left page.

Placement

Aura supports two placement options; standing (desktop) and wall-mounted. It is recommended to place the device 'away' from obstacles and objects.

Standing

1. Place the device vertically on a flat surface.
2. Store the wall-mount bracket in a safe place.

Warning: Do not cover the device with anything, or put the device horizontally on a flat surface, because this will interfere with the ventilation of the Aura E650.

Operation Temperature 0°C ~ 40°C

Wall-mount

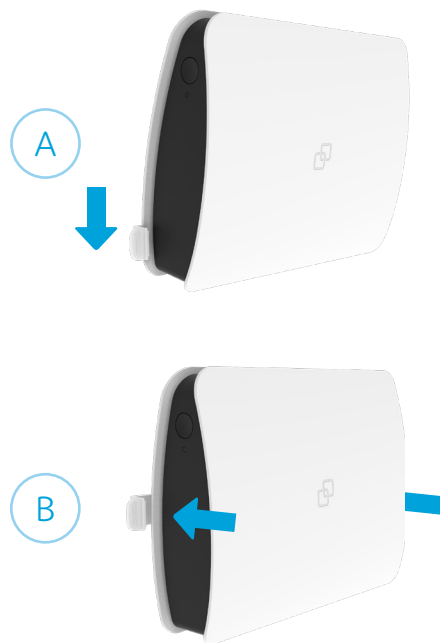
1. Download and print the drilling guide from <https://genexis.eu/product/aura/downloads>
2. Use the drilling guide to drill the holes and insert the plugs.
3. Screw the wall-mount bracket to the wall with the provided screws.

Using the wall-mount bracket

Keep the device with the port side facing up or down, as preferred. There are two options:

- A Either, slide the device from top or bottom into the wall-mount bracket by placing a side panel of the device into the wall-mount placeholders, until it is halfway.
- B Or alternatively, press the device in the wall-mount bracket until it is locked and holds the device (you need to apply a little force to lock the device in the bracket).

When removing the device from the wall-mount bracket you can either slide out or need to press the placeholders backwards to unlock the outside panels of the device.



Setting up the Aura

1. Connect a network cable between your broadband outlet and the Aura E650 WAN port (red connector).
2. Connect the supplied power adapter to the Aura and plug the adapter into a power socket.
3. Flip the ON/OFF switch at the back of the device to turn it on.
4. Wait until the Status LED stops blinking and turns solid green.

Your Aura E650 is now ready for use.

Connecting your telephone

You can connect a regular plain telephone to the Aura E650.

1. Insert a telephone cable of a regular wired telephone in the telephone port (green connector).

Connecting to the wireless network

Automated pairing

You can connect your personal device to the Aura E650 by scanning the QR-code on the label of the Aura E650 or use the Mode button (WPS function) of the Aura E650. Please check on your personal device how this can be initiated. Before pairing, make sure the Status LED is solid green. If not, switch the WiFi ON as described in this installation guide.

Manual pairing

You can also connect your personal device to the Aura E650 via manual pairing using the WiFi network name and WiFi key printed on the label of the Aura E650.

1. Perform a search of available wireless networks on your personal device.
2. Select the WiFi network name printed on the label.
3. Enter the WiFi key printed on the label.

Using the web interface

When connected to your network, you can access the Aura E650 web interface to change your network settings.

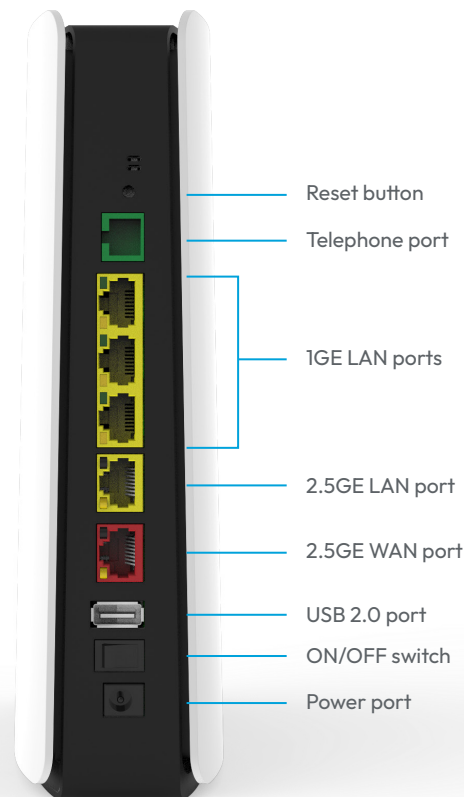
1. Use a web browser on your personal device and navigate to 'Web interface' as printed on the label of the Aura E650.
2. Login by inserting the 'Username' and 'Password'.
3. If required, change your device configurations.

Switching the WiFi ON/OFF

The WiFi function of the Aura E650 can be switched ON or OFF by means of the Mode button.

- Switch OFF: On the Aura E650, press and hold the Mode button until the Status LED turns solid yellow.
- Switch ON: On the Aura E650, press and hold the Mode button until the Status LED starts blinking green or turns solid green.

Port overview



Reset button (recessed)

Reboot – press and release once
Factory reset – press and hold until the Status LED starts fast blinking green

ON/OFF switch

Switch ON – flip the switch to ON
Switch OFF – flip the switch to OFF

LED & button overview



Mode button

Pairing – press and release once
WiFi ON – press and hold until Status LED turns green (blinking or solid)
WiFi OFF – press and hold until Status LED turns solid yellow

Status LED

Green – system is operational ready
Green (blinking) – no broadband connectivity
Yellow – system startup or WiFi OFF
Yellow (blinking) – system is not ready yet
Blue – automated pairing successful
Blue (blinking) – automated pairing in progress
Red – system / booting failure
Off – power off

Support

Is the Status LED solid red?

Contact your service provider.

Is the Status LED solid yellow?

The WiFi of the Aura E650 is turned OFF. If required, please turn the WiFi ON as described in this installation guide.

Is the Status LED not solid blue after automated pairing?

Automated pairing between the Aura E650 and personal device failed. Please follow the instructions again to automatically pair your personal device to the wireless network.

Is the Status LED blinking green for 5 minutes?

Aura E650 does not have a connection with the broadband network. Please verify your wired connection with the broadband outlet or contact your service provider.

Is the Status LED blinking yellow?

The Aura E650 is being upgraded with new software. Please wait until the Status LED turns solid green again.

Return the Aura E650 to factory default settings

With the reset button you can reset the Aura E650 to its factory default settings. You can press this button with a small pin or paperclip.

1. Press and hold the reset button until the Status LED starts fast blinking green.
2. Wait until the Status LED turns solid green again.

Your Aura E650 is now setup again with factory default settings as printed on the label.

EU Declaration of Conformity

Hereby, Genexis Netherlands B.V. declares that the Aura E650 product is in compliance with Directive 2014/53/EU, Directive 2009/125/EC, Directive 2011/65/EU and Delegated Directive 2015/863.

The full text of the EU declaration of conformity is available at the following internet address:
<https://genexis.eu/product/aura/red/aura-e650>

Company Name

Genexis Netherlands B.V.

Company Address

Lodewijkstraat 1a
5652 AC Eindhoven
The Netherlands

Signature of authorized person



Name and title of authorized person

Maarten Egmond, CTO

Place of issue

Eindhoven
The Netherlands

Date of issue

2023-07-10

Frequency bands and maximum radio frequency power transmitted

The Aura E650 operates in the frequency bands of 2,4 Ghz and 5Ghz.

The maximum radio frequency power transmitted in these bands is:

- 20 dBm (100 mW) (EIRP) for the 2400 MHz – 2483.5 MHz band
- 23 dBm (200 mW) (EIRP) for the 5150 MHz – 5350 MHz band *
- 30 dBm (1000 mW) (EIRP) for the 5470 MHz – 5725 MHz band

* In EU, 5150 – 5350 MHz is restricted to indoor.